

Our Carnal Hearts – International Tech Spec 2017

General

The Show runs 60 minutes no interval

Total get in time should be no less than 8 hours prior to Audience arrival, based on a full pre-rig, patch and plot.

Sample Schedule

Day 1	Travel
Day 2	Rest
Day 3	Tech
Day 4	Tech & Perf 1
Day 5	Perf 2 & Strike
Day 6	Workshop/Sing It
Day 7	Travel

Additional performances and artist process workshops can be arranged subject to fee and scheduling.

People

5 x Performers (Rachel Mars, Louise Mothersole & 3 singers)

1 x Producer/Company Manager

1 x LX/Sound Operator Technician to be provided by Venue. If the sound and light boards cannot be operated by one person, we will require 2 x operators.

Staging Dimensions

3 x 3 metre stage area [in the round], with the ability to increase to 4 x 4 m.

Stage/Audience Layout Plan

Please see appendix documents

Audience layout/capacity to be discussed with company in advance.

No more than 2 rows of audience deep on the flat – further rows need to be raised on rostra

Lighting Rig Plan

2 Generic Plans . Please send a venue rig plan to Rachel@rachelmars.org and we will provide a venue specific lighting plan.

Lighting Plot sheet to follow.

Lighting and FX– Toured by Company

ETC Nomad Lighting Console (if possible, can use venue's lighting console)

Gel toured by company

Lighting and FX – To be provided by Venue

1 x Hazer

4 x Pin Spots (Par 36)

5 Pin DMX into Venue Dimmer

1 x Monitor Screen

Sound – Toured by Company

We require the use of your house system and a mini jack input input via D.I. to the sound desk. Playback is from a Macbook running QLab.

Sound – To be provided by Venue

4 x cabled mics on stands

1 x lapel mic (not headset)

Props/Set

Venue to provide 1 x Nespresso (Or Similar) pod-coffee machine.

Venue to provide 1 x small coffee table/stool

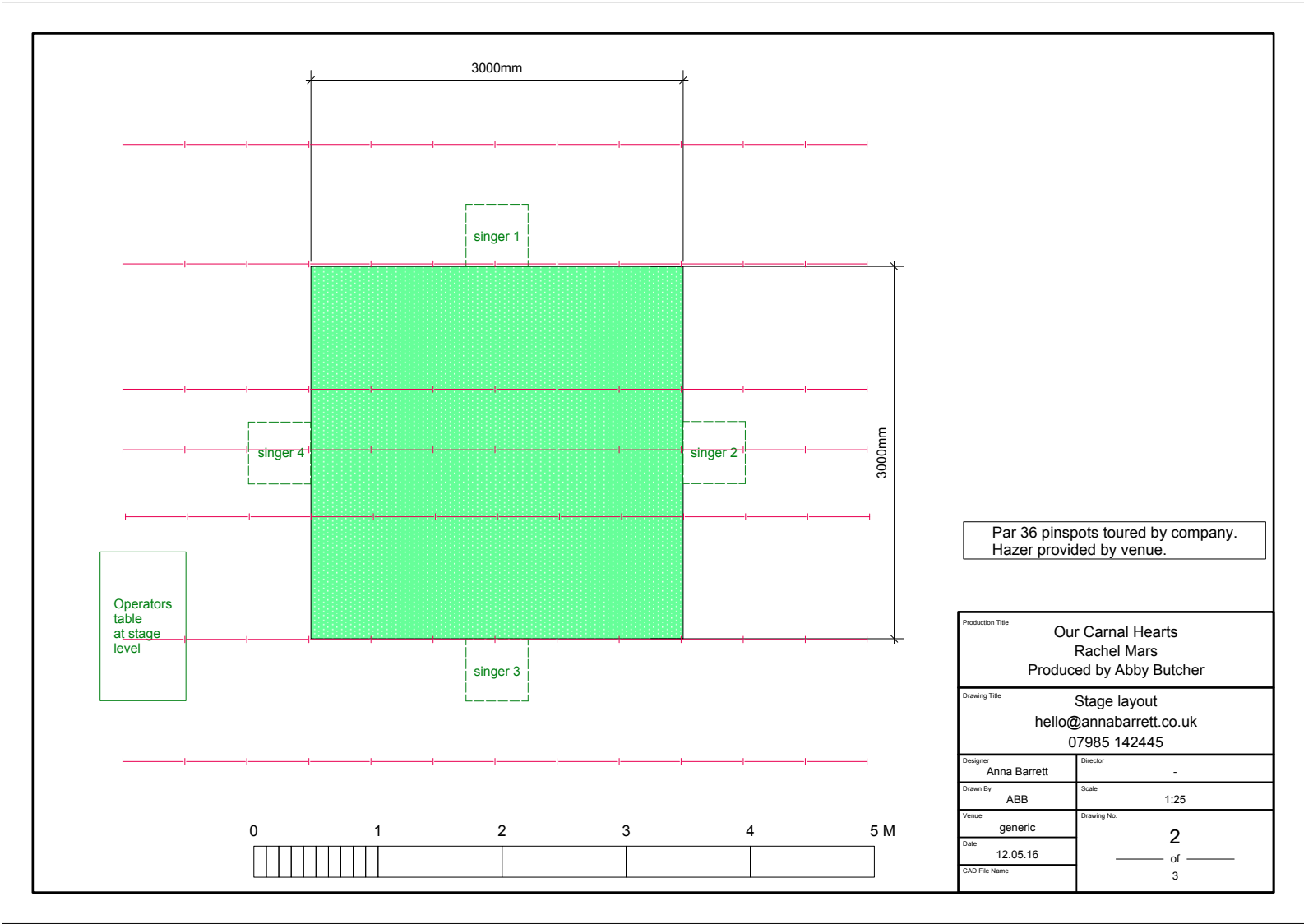
Venue to provide 1 x large kitchen knife

Contacts:

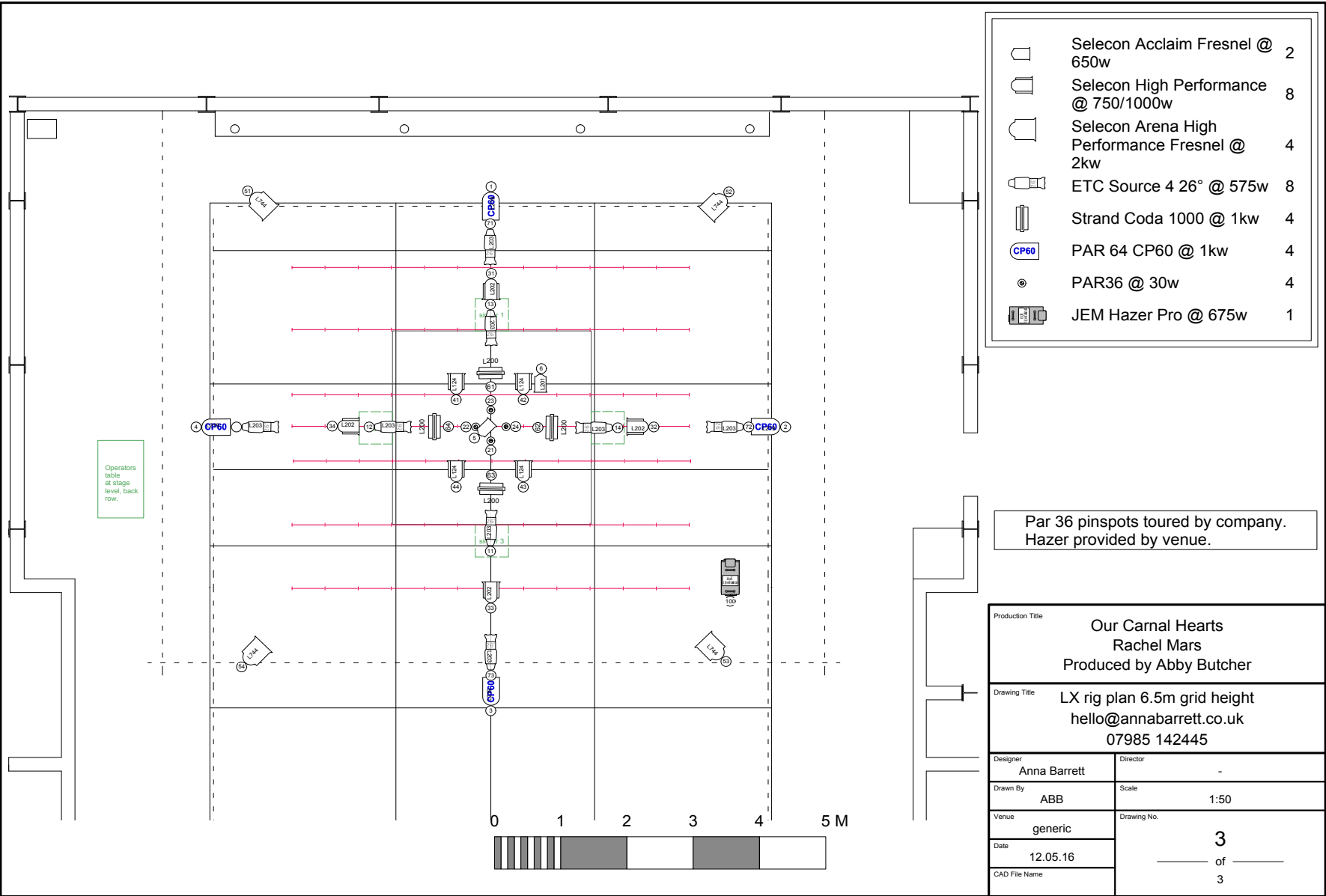
Rachel Mars – Performer/Writer – 0044 7855 776 991 / Rachel@rachelmars.org

Lucy Jackson – Producer - +19175655097 / Lucy.jackson@gmail.com

GROUND PLAN



Generic High Rig LX Plan



Generic Low Rig LX Plan

